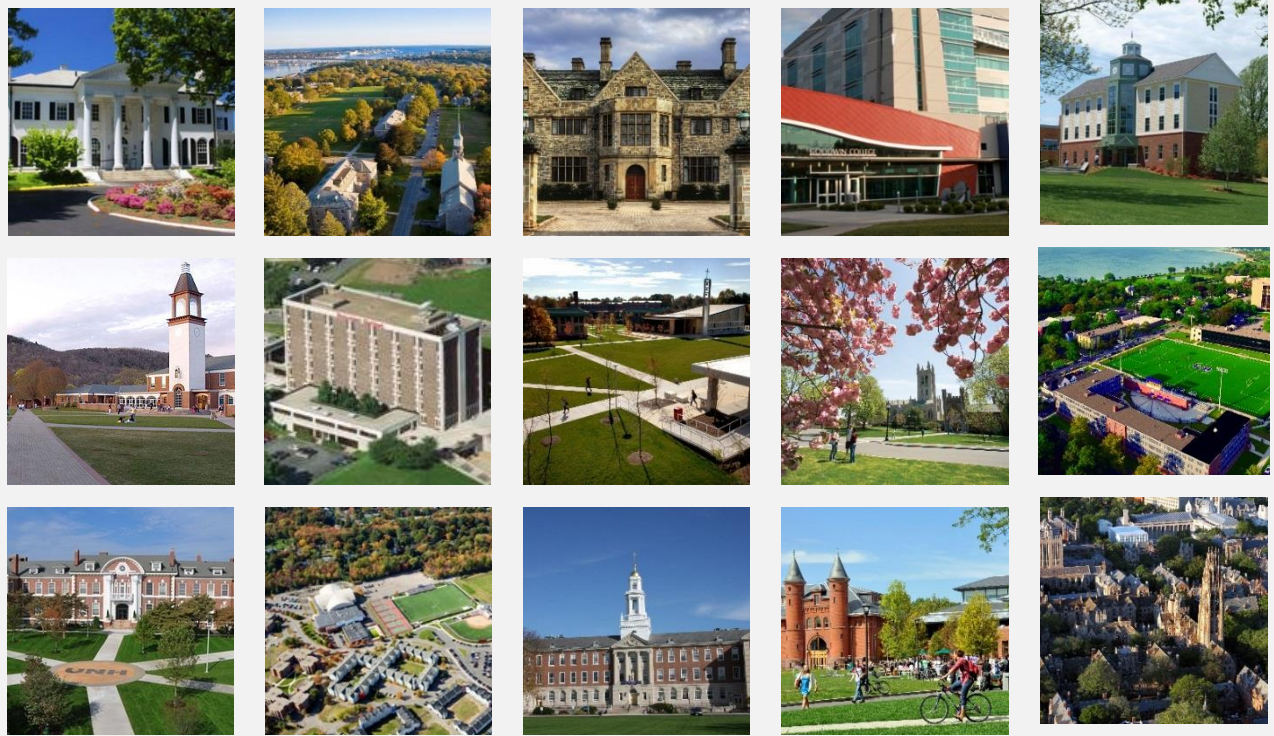




Partnering for Progress

2020 ANNUAL MEMBER FORUM



November 23, 2020

Virtual Conference

Pre-registration is required
Visit www.theccic.org to register.

Registration Information

- There is no fee to attend, but pre-registration is required.
- Workshop participation links will be sent via email on **November 16th**.
- Please register online at our website, www.theccic.org

Schedule

- 9:00 a.m.** Workshop Session 1
- 10:00 a.m.** Workshop Session 2
- 11:00 a.m.** Workshop Session 3
- 11:55 a.m.** Vendor Fair

Workshop Selections

- We will offer three workshop sessions, each 50 minutes in duration.
- Look for color-coded category tags that indicate suggested audience.

REGISTER TODAY
www.theccic.org

Session 1 (9:00-9:50 a.m.)

1A: Navigating Public Scrutiny and Historical Events in Independent Investigations: Lessons from the Front Line - A CT University and a Catholic Diocese

Connecticut's former United States Attorney Deirdre Daly, a partner at Finn Dixon & Herling, LLP, retired Connecticut Superior Court Judge Robert Holzberg and Adam Mocchiolo, both partners at Pullman & Comley, will discuss how to navigate two common and thorny issues in complex independent investigations: 1) The public's interest in independent investigations 2) Investigating historical events. The presenters will review two recent high-profile investigations that they conducted: Ms. Daly's investigation and public report of students' allegations of sexual misconduct committed by a former Medical School professor at Yale; and Judge Holzberg and Pullman & Comley's public report on the history of clerical sexual abuse in the Diocese of Bridgeport. Your questions and insights will be encouraged in this interactive discussion.

Presented by Finn Dixon & Herling, LLP and Pullman and Comley

[Human Resources/Benefits](#) | [Legal](#) | [Risk Management](#) | [Student Affairs](#)

1B: Energy Management / Tips on How to Lower Your Total Energy Spend

This workshop is designed to provide an overview of the key components of a successful energy management plan. The components include all aspects of a competitive bid process for supply agreements, dashboard access to actual energy data for real-time evaluation, invoice audits and GHG reporting along with an overview of available incentive programs to reduce usage or increase revenue.

Presented by Balanced Rock Energy

[Facilities](#) | [Fiscal](#) | [Risk Management](#)

1C: 2020s Title IX Overhaul: Views from the Bar and the Bench

New Title IX regulations requiring sweeping changes to the previous regime took effect in August 2020. Participants will be briefed on the key issues, and presenters will discuss how colleges must now address sexual harassment complaints under Title IX, including via investigations, live hearings, real-time cross-examination, virtual technology, mandatory appeals, and/or mediation. Trends and recent litigation will also be discussed.

Presented by Day Pitney LLP

[Communications](#) | [Government Affairs](#) | [Human Resources/Benefits](#) | [Legal](#) | [Risk Management](#) | [Student Affairs](#)

Session 1 (9:00-9:50 a.m.) *continued*

1D: Adobe Sign & Student Creative Cloud in Today's Distance Learning World

Please join Adobe and ScholarBuys to learn more about two new programs that are perfect for today's distance learning world. Adobe's programs that help academic institutions continue to deliver access to students whether on or off campus, and modernize document workflow processes across multiple departments within the institution, replacing cumbersome paper processes in a secure and compliant fashion.

Presented by Scholarbuys

[Academic](#) | [Human Resources/Benefits](#) | [Student Affairs](#) | [Tech/Research](#)

1E: Approaching the “Zone of Exigency”: Legal and Financial Challenges in Higher Education

In this session, presenters from advisor firm Carl Marks Advisors and higher education law firm Saul Ewing Arnstein & Lehr LLP will discuss the hard, but necessary, conversations that we must have in the current environment: namely, when is our institution approaching financial exigency, how do we know, what does that mean, and what are the practical and legal options moving forward?

Presented by Saul Ewing Arnstein & Lehr LLP

[Fiscal](#) | [Risk Management](#)

Session 2 (10:00-10:50 a.m.)

2A: Preparing for Connecticut’s Paid Family Medical Leave Insurance Program

On June 25, 2019, Connecticut passed legislation to create a comprehensive paid family and medical leave insurance program (PFMLI Program), which becomes effective January 1, 2021. This informative presentation will provide an overview of PFMLI and what it means for campus employees, and a discussion of employer obligations under the new program.

Presented by Shipman and Goodwin

[Human Resources/Benefits](#) | [Legal](#) | [Risk Management](#)

2B: Data Driven Curricula Optimization

COVID has catalyzed the need for universities to take a data-driven and nimble approach to understand and adapt to the needs of their students, regions, and employer partnership. Integrating longitudinal and real-time labor market and adding a splash of machine learning, Emsi is able to provide those insights to institutions big and small.

Presented by Emsi

[Academic](#) | [Career Services](#) | [Tech/Research](#)

2C: Trinity College's New Innovation Hub: Innovation through design and construction, bridging liberal arts with digital technology

The Innovation Hub began as a vacant 12,000 sf office space in Constitution Plaza and a vision of collaboration, invention, and technology. The integrated SLAM team created Trinity College’s mission to bridge liberal arts with technological innovation for job training through local business partnerships, fast-track design and construction and work with the City of Hartford and State grant funding agencies.

Presented by SLAM

[Academic](#) | [Facilities](#) | [Fiscal](#) | [Tech/Research](#)

Session 2 (10:00-10:50 a.m.) *continued*

2D: Student Safety and Support Through Uncertainty

Join TimelyMD's Co-Founder and Chief Medical Officer, Alan Dennington, M.D. and Nance Roy, Ed.D, Chief Clinical Officer at the Jed Foundation, to discuss best practices for supporting student mental health. This workshop will offer solutions to meet the growing demand for mental health care and provide strategies for improving campus wellness.

Presented by TimelyMD

Legal | Risk Management | [Student Affairs](#)

2E: Mindfulness in Turbulent Times: Cultivating Calm and Clarity

If there's one thing we know to be true, it's that things in life are never certain. And while we can typically handle uncertainty when it comes along in small doses, the fear and anxiety which accompanies exceptionally disruptive events can leave us feeling isolated and overwhelmed. Enter mindfulness. In this program, mindfulness expert Tara Healey of Harvard Pilgrim Health Care will introduce the fundamental principles and practices of mindfulness in clear, practical terms—describing how the brain's built-in capacity for focus and clarity can be developed, and then utilized, in support of actionable tools and techniques for meeting the challenges of this unprecedented time, or of any time.

Presented by Harvard Pilgrim Healthcare.

[Academic](#) | [Career Services](#) | [Communications](#) | [Facilities](#) | [Fiscal](#) | [Government Affairs](#) | [Human Resources/Benefits](#) | [Legal](#)
[Risk Management](#) | [Student Affairs](#) | [Tech/Research](#)

Session 3 (11:00-11:50 a.m.)

3A: Implementation of the Families First Coronavirus Response Act and Covid-Related Accommodations

This presentation will explore the implementation of the Family First Coronavirus Response Act, where we are now, and working with employees who request Covid-related accommodations that do not fall under the FFCRA.

Presented by Murtha Cullina, LLP

[Human Resources/Benefits](#) | [Legal](#) | [Risk Management](#)

3B: Data Privacy Internal Controls - Relevant Now More Than Ever

While data privacy compliance was a top priority before the pandemic, the rush of handling health and safety concerns and many other complications has caused it to drop. This session will highlight the importance of data privacy and the internal controls, interim and permanent, that will help your organization protect it, especially when more data is being collected than ever.

Presented by CohnReznick LLP

[Fiscal](#) | [Legal](#) | [Risk Management](#) | [Tech/Research](#)

3C: The Case for Shared Libraries - Merging Libraries Benefits City, College, Students and Residents

Join us for a discussion and case-study of how one city and a university brought the academic community and the public together in a combined library. The result better served the literary, cultural, and educational aspirations of the residents of the community and the university's staff and students.

Presented by Pullman & Comley, LLC

[Academic](#) | [Facilities](#) | [Fiscal](#) | [Government Affairs](#) | [Human Resources/Benefits](#) | [Legal](#) | [Student Affairs](#)

3D: How COVID-19 Has Reshaped Student Behaviors and Prompted a Campus Lifestyle Evolution

Sodexo has fielded the bi-annual International University Lifestyle survey for the past decade. The 2020 version of the survey was fielded in January, before COVID-19 became a global threat. Given that the Pandemic shuttered most campuses and shifted instruction online - the overall mindset of students changed. A pulse survey was fielded in May to understand how these changes would affect student lifestyles and perceptions. This session will evaluate these changes and the overall effect that COVID-19 has had on student expectations, perceptions and return to campus.

Presented by Sodexo

[Career Services](#) | [Communications](#) | [Facilities](#) | [Fiscal](#) | [Student Affairs](#)

3E: How AP Credit Policies Expand College Access & Success

Uniform AP Credit Policies offer institutions improved enrollment potential as well as subsequent improvements in retention and graduation rates. Join us to learn about the impact of adopting and implementing an AP Credit Policy at your institution.

Presented by The College Board

[Academic](#) | [Student Affairs](#) | [Tech/Research](#)

REGISTER TODAY
www.theccic.org