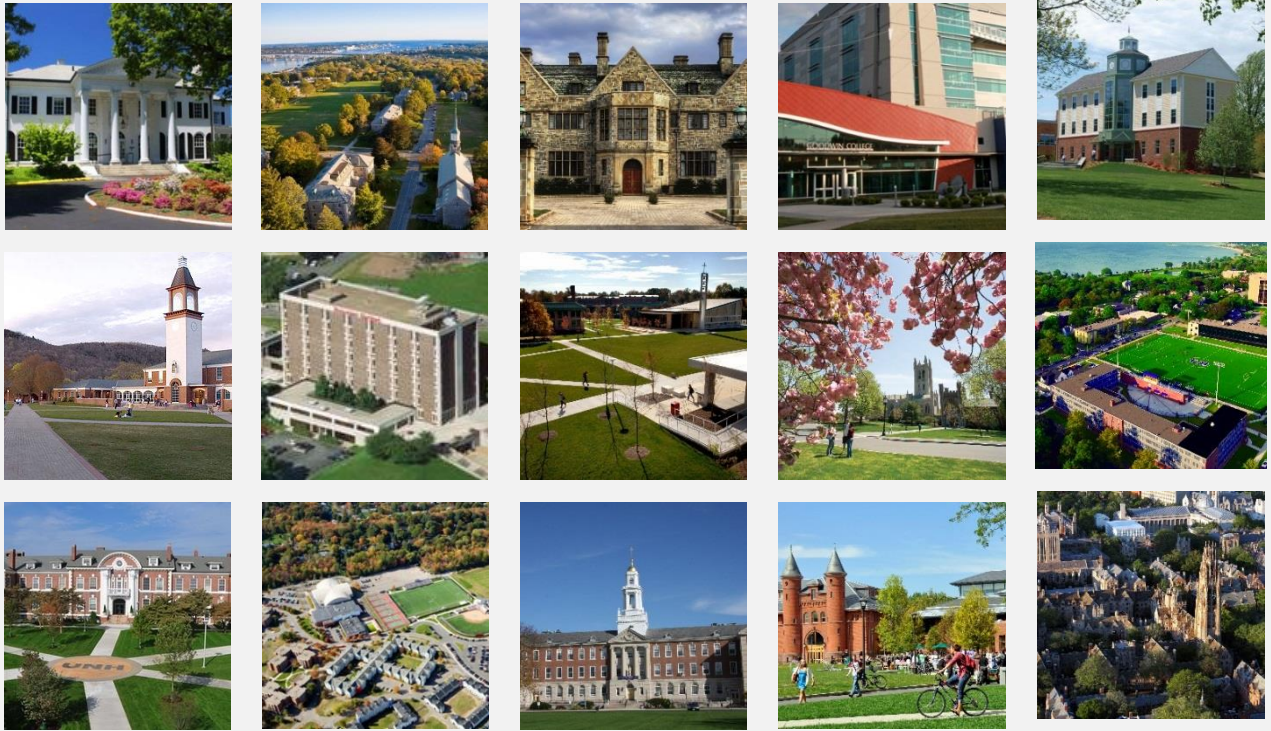




Partnering for Progress

2021 ANNUAL MEMBER FORUM



November 22, 2021

Virtual Conference

Pre-registration is required
Visit www.theccic.org to register.

Registration Information

- There is no fee to attend, but pre-registration is required.
- Workshop participation links will be sent via email on **November 17th**.
- Please register online at our website, www.theccic.org

Schedule

- 9:00 a.m.** Workshop Session 1
- 10:00 a.m.** Workshop Session 2
- 11:00 a.m.** Workshop Session 3
- 12:00 p.m.** Exhibitor Fair

Workshop Selections

- We will offer three workshop sessions, each 50 minutes in duration.
- Look for color-coded category tags that indicate suggested audience.

REGISTER TODAY
www.theccic.org

Session 1 (9:00-9:50 a.m.)

1A: Connecticut FMLA and Leave Changes on the Horizon

On January 1, 2022, the Connecticut Family and Medical Leave Act will go into effect. This session will review the law and answer employer questions including: do the changes apply to my school; how do the changes impact employees currently on approved family or medical leave; and is this the same as the paid family and medical leave insurance program.

Presented by [Shipman & Goodwin LLP](#)

[Human Resources/Benefits](#) | [Legal](#)

1B: Social Listening

Social media listening provides a deep understanding of your audience including what students care about, what drives them, and how they see the world. Sodexo's team of student insight experts will showcase how they translate the rich insights from social media listening into optimized campus marketing, sales, retention, and solution strategies that continually exceed student expectations.

Presented by [Sodexo](#)

[Academic](#) | [Career Services](#) | [Communications](#) | [Fiscal](#) | [Human Resources/Benefits](#) | [Student Affairs](#) | [Tech/Research](#)

1C: Athletic Performance on and Off the Field

While student-athletes are typically evaluated by their performance on the competition field, the importance of off-field performance has become a top priority with recruiting and player development. This workshop will showcase student-athlete success centers with academic spaces, training tables, mental health, life skills programs, and other support/resource spaces from projects at Pittsburgh, Arkansas, and Texas.

Presented by [The S/L/A/M Collaborative](#)

[Athletics](#) | [Facilities](#) | [Student Affairs](#)

Session 1 (9:00-9:50 a.m.) *continued*

1D: Risk to Opportunity in ESG Reporting

Our presentation will cover the topic of Environmental, Social, and Governance (ESG) for Higher Education including ESG components, reporting risks, and how ESG reporting raises strategic, mission-based opportunities by: - Identifying stakeholders/their needs - Setting objectives based on risks and risk appetite - Establishing roles/processes to validate reportable data. Our specialists will discuss two areas of ESG focus, Investments and Construction Monitoring

Presented by [CohnReznick LLP](#)

[Academic](#) | [Communications](#) | [Facilities](#) | [Fiscal](#) | [Government Affairs](#) | [Human Resources/Benefits](#) | [Legal](#) | [Risk Management](#)
| [Student Affairs](#) | [Tech/Research](#) |

1E: Student Wellbeing

Over 50% of 2021 entering college students report being “Emotionally/Mentally exhausted” (BCSSE, 2021). How can we meet and support the increasing wellbeing needs of our students? This session will be a round table discussion of the problem and strategies to support student success outside the classroom.

Presented by [The Virtual Care Group](#)

[Student Affairs](#)

Session 2 (10:00-10:50 a.m.)

2A: How Colleges Can Combat Financial Pressures in this Complicated Economic Environment

According to an August 2021 survey by CNBC, 74% of colleges and universities are facing financial trouble. From the problems created by Covid to decreased state and federal funding to reduced enrollments to inflationary pricing, these are tough times for higher education. What proactive measures are you taking to lead your organization through this financial uncertainty? At Expense Reduction Analysts, a global expense management consulting firm, we have helped many organizations reduce costs and find hidden capital that can be used to achieve a better educational environment. From our 25 years of experience, ERA will share tips, strategies and debunk common misconceptions about reducing costs.

Presented by [Expense Reduction Analysts](#)

[Fiscal](#)

2B: Cybersecurity, A Boardroom, or Server Room Responsibility?

This presentation will walk users through the importance of risk assessments as well as GLBA and NIST compliance requirements. This process will illustrate that management has more responsibility for security than IT, and in order to better secure our data, senior leaders and boards of trustees must lead security initiatives.

Presented by [BKD Cyber](#)

[Risk Management](#)

2C: Connecticut Independent College Transfer Guarantee

The Connecticut Guarantee offers guaranteed admission for associate degree holding CT community college graduates into participating independent 4-year institutions. Attendees will receive detailed information about the program which launched this year at nine CCIC Member Institutions.

Presented by [New England Board of Higher Education](#)

[Academic](#) | [Student Affairs](#) | [Tech/Research](#)

Session 2 (10:00-10:50 a.m.) *continued*

2D: The Future of Remote Working in Higher Education

How can your campus blaze a new trail for the future of remote work? Join us as an EAB subject matter expert will discuss the future of a working environment. We'll discuss this tough question, along with how it deals with policy implications for your campus.

Presented by [EAB](#)

[Human Resources/Benefits](#) | [Legal](#)

2E: Returning to Travel – Considerations for 2022 & Beyond

Representatives from Gallagher's Global Risk Practice will be hosting a workshop to address and examine insurance considerations for returning to travel in 2022 and beyond. Gallagher will take a deep-dive into the international travel insurance market outlook and best practices to consider as your institution looks to resume normal travel operations for students, faculty, staff, and other employees.

Presented by [Gallagher Student Health](#)

[Academic](#) | [Risk Management](#) | [Human Resources/Benefits](#) | [Student Affairs](#)

Session 3 (11:00-11:50 a.m.)

3A: Building Anti-Racist Skills Through Mindful Listening

This course will teach participants to use the skills of mindful listening as a foundation for more productive conversations around race and social justice. The goal of mindful listening is to make sure there is space for every person expressing themselves to feel heard and to build conversations that are deeper; more heartfelt; more impactful; and potentially, more mind-changing.

Presented by [Harvard Pilgrim Health Care](#)

[Academic](#) | [Athletics](#) | [Career Services](#) | [Communications](#) | [Facilities](#) | [Fiscal](#) | [Government Affairs](#) | [Human Resources/Benefits](#) | [Legal](#) | [Risk Management](#) | [Student Affairs](#) | [Tech/Research](#) |

3B: NLRB's General Counsel Seeks to Allow Athletes to Form a Union and Require Universities to Bargain

In the wake of a recent memo issued by the National Labor Relations Board's Office of the General Counsel, efforts to afford college athletes the right to form labor unions and require universities to bargain have been gaining momentum. In this webinar, we will review the General Counsel's memo and other recent legal developments on the rights of college athletes to organize, and will discuss the relevant implications for colleges and universities.

Presented by [Robinson & Cole LLP](#)

[Athletics](#) | [Human Resources/Benefits](#) | [Legal](#) | [Student Affairs](#)

3C: Preparing Successful Students: Cambridge International Student Performance in the US

Learn how Cambridge International students within the US are being prepared for, and proving successful at US universities. Hear about two new research findings: Cambridge IGCSE Performance and First Year Performance at Arizona State University; AS-Level subsequent course and first year performance at Florida State University.

Presented by [Cambridge Assessment International Education](#)

[Academic](#) | [Student Affairs](#)

Session 3 (11:00-11:50 a.m.) *continued*

3D: Managing the Academic Enterprise: Student Success and Financial Sustainability

A university may significantly reduce instructional costs and increase student success by strategic management of completion paths for academic programs. This session introduces a data-informed planning framework that should be part of every institution's student success ecosystem. Understand key elements that must be considered to manage academic operations effectively and efficiently in a way that drives students' degree velocity.

Presented by [Ad Astra](#)

[Academic](#) | [Fiscal](#) | [Student Affairs](#) | [Tech/Research](#)

3E: Recreational Cannabis is now Legal in CT: Action Steps for Colleges and Universities

A discussion of Connecticut's legalization of recreational cannabis with recommendations for updating practices and policies for employees, students, and vendors. Topics will include: an overview of the cannabis law, its intersection with the Drug Free Communities and Schools Act, safety issues, recognizing impairment, and steps to take to educate your community, ensure safety on campus and comply with applicable law.

Presented by [Pullman & Comley](#)

[Academic](#) | [Athletics](#) | [Communications](#) | [Facilities](#) | [Fiscal](#) | [Government Affairs](#) | [Human Resources/Benefits](#) | [Legal](#) | [Risk Management](#) | [Student Affairs](#)

REGISTER TODAY
www.theccic.org